

8.82 +/- ACRES FOR SALE IN CONOVER

401 10TH STREET NW CONOVER, NC 28613



AERIAL



Coming soon:
Conova Crossings
105 Townhomes

Coming soon:
120 Apartments



DETAILS



SPECIFICATIONS

Price: \$499,000

Acres: 8.82 +/-

Zoning: B-2

Topography: Rolling

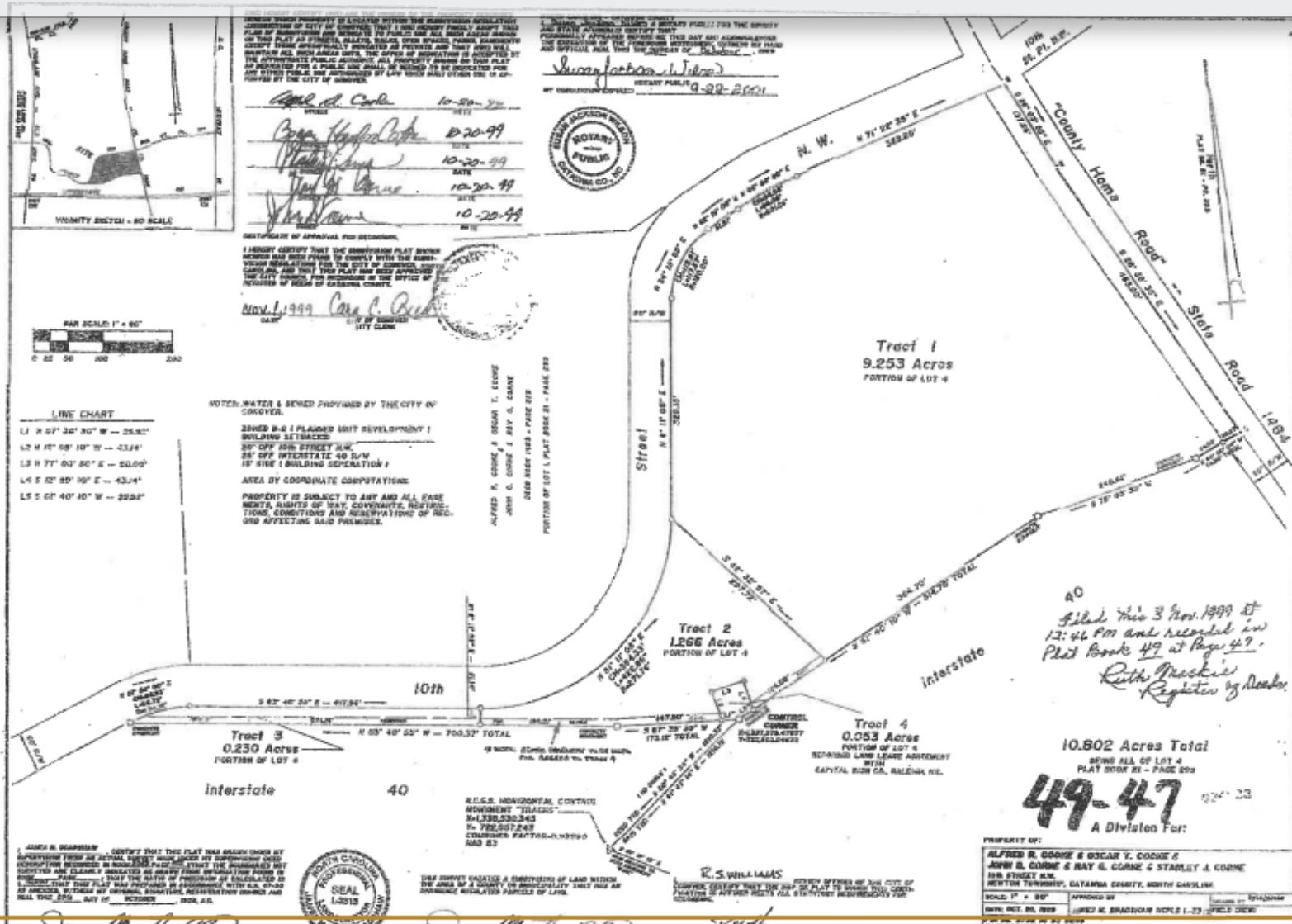
Hard corner at the stoplight of County Home Rd. and Conova Shopping Center. Owner willing to subdivide and sell off 2 Acres +/- on the corner for \$300,000. Site is surrounded by commercial development, but close in proximity to Downtown Conover and Newton Conover Middle School.

*Property lines not to scale.

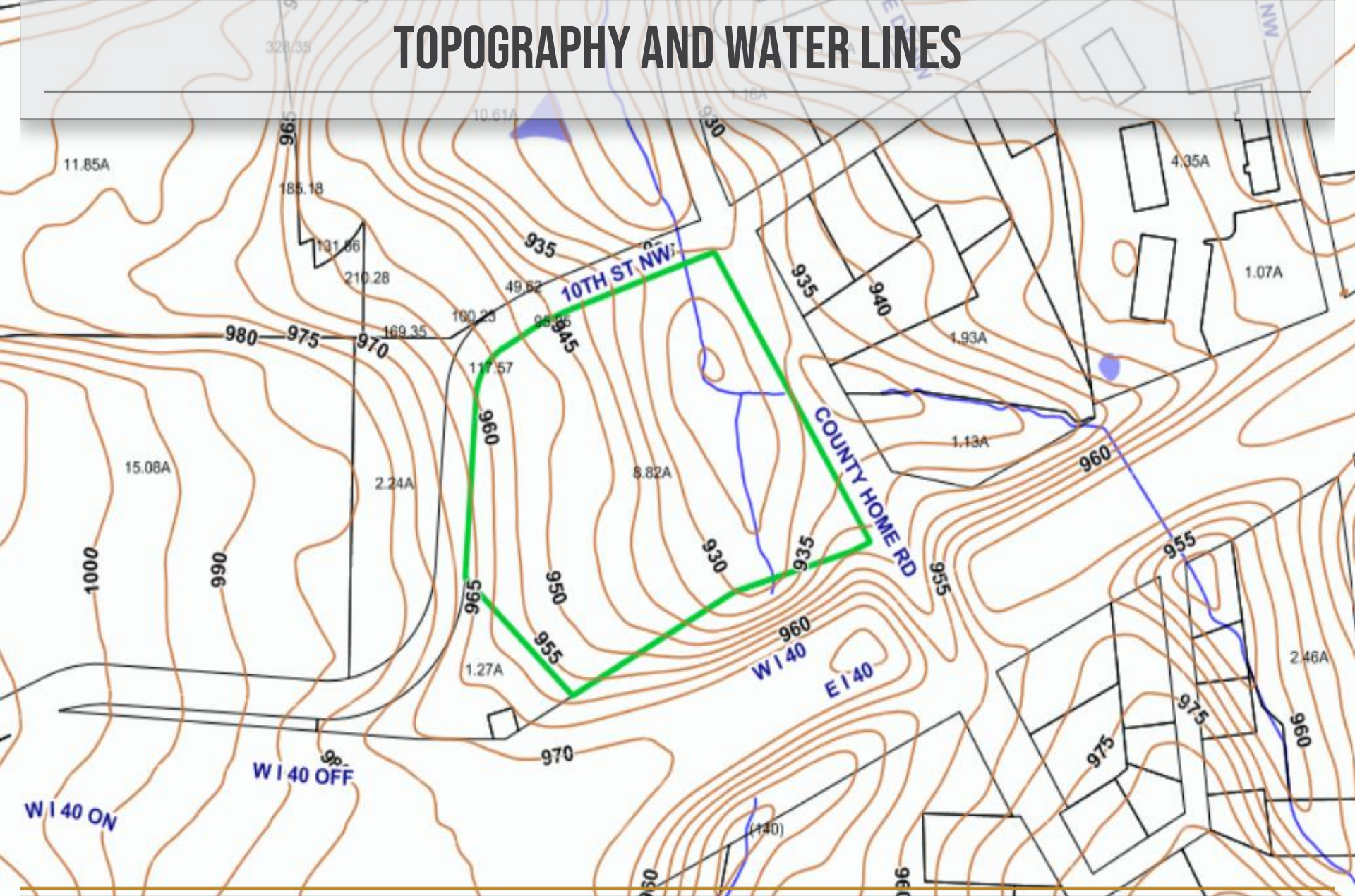
DEMOGRAPHICS

	1 Mile	3 Mile	5 Mile
Total Population	1,373	15,235	45,202
Total Households	598	6,322	18,142
Median Household Income	\$60,304	\$59,102	\$54,425
Total Employees	58	806	2,071

SURVEY



TOPOGRAPHY AND WATER LINES



FOR MORE INFORMATION:

Jenny Eckard
828.320.8989
jenny@commercialfirst.net
www.commercialfirst.net

3031 N Center St.
Hickory, NC 28601

COMMERCIAL  FIRST

Commercial Real Estate

Site Selection

