

INDUSTRIAL LAND IN EAST BEND

CENTURY POINT DRIVE EAST BEND, NC 27018



AERIAL



East NC 67 (4,264 +/- CPD)

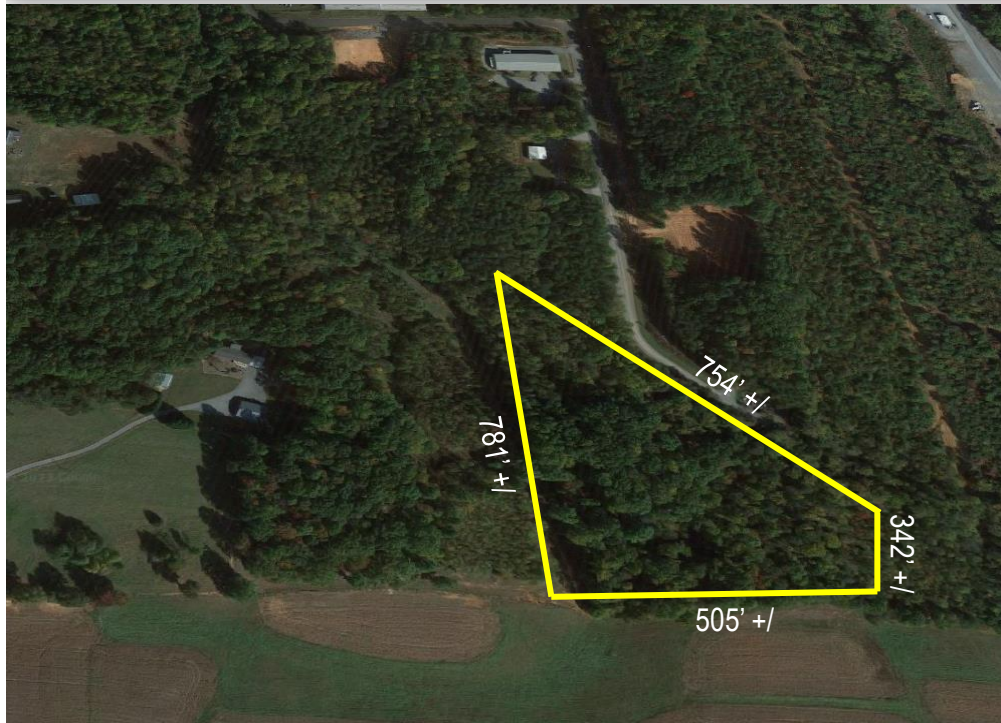


Salem Trail

EAST BEND MOTORSPORTS



DETAILS



SPECIFICATIONS

Price: \$250,000

Acres: 6.27 +/-

Zoning: MI (Manufacturing Industrial)

6.27 +/- Acres of rolling land with a small stream near the edge of the property. Property located in Yadkin County.

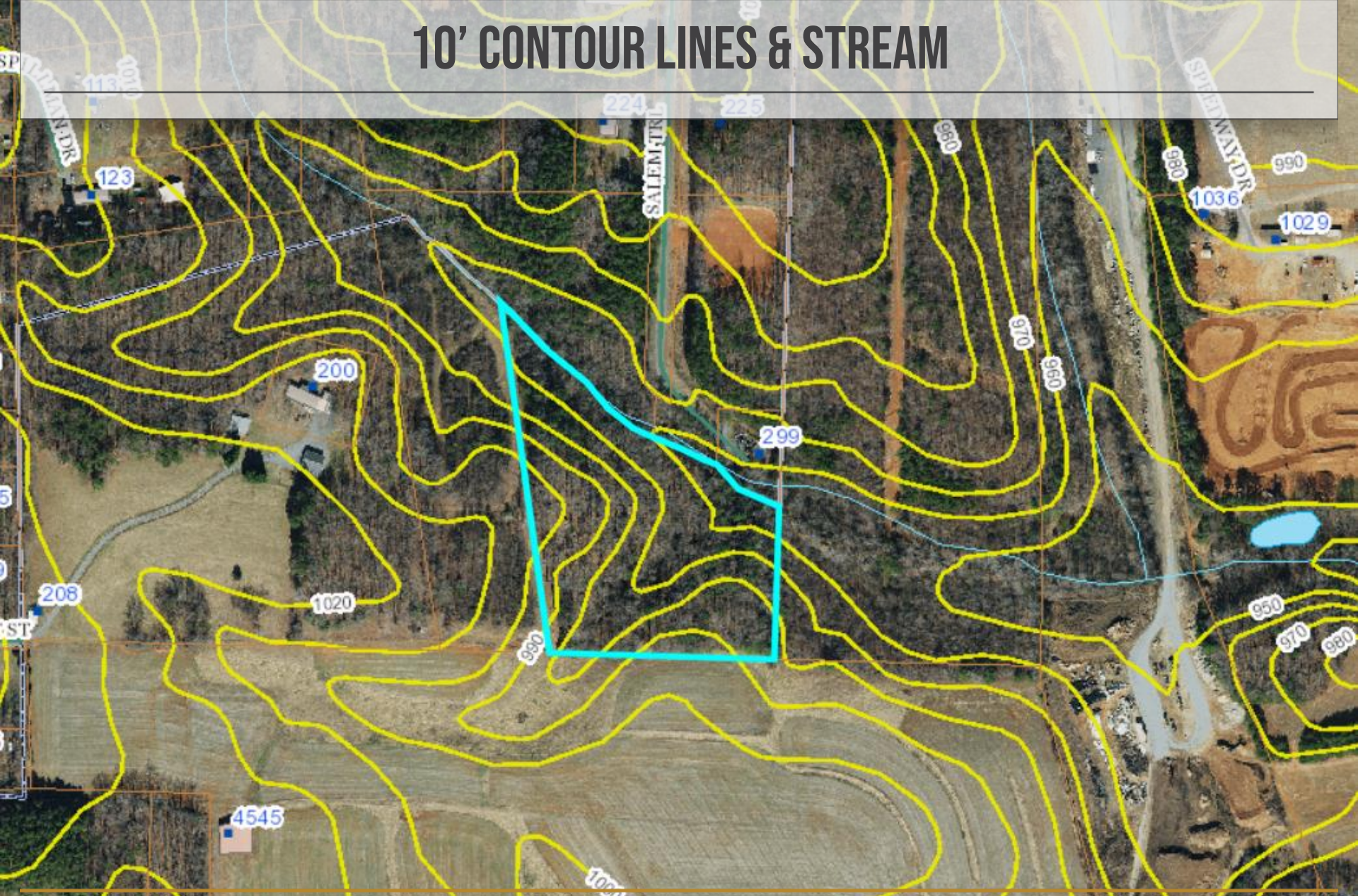
*water/sewer hook up available per East Bend Town Hall.
(Buyer to confirm)

**Property Dimensions are not to scale.

DEMOGRAPHICS

	1 Mile	3 Mile	5 Mile
Total Population	609	3,435	6,736
Total Households	253	1,434	2,815
Median Household Income	\$97,533	\$67,703	\$64,554
Total Employees	163	362	572

10' CONTOUR LINES & STREAM



FOR MORE INFORMATION:

Shana White
828.446.3404
shana@commercialfirst.net
www.commercialfirst.net

3031 N Center St.
Hickory, NC 28601

COMMERCIAL FIRST



Commercial Real Estate | Site Selection

