

# LAND FOR SALE ON SPRINGS ROAD

2633 SPRINGS ROAD NE HICKORY, NC 28601



# AERIAL



# DETAILS



## SPECIFICATIONS

Price: **REDUCED!!** \$999,000

Acres: 10.33 +/-

Topography: Level

Join Biscuitville, Dollar General, and many other successful businesses with frontage on Springs Rd. Property suitable for Commercial development. 8+ Acres for residential in the rear of the property.

### DEMOGRAPHICS

#### 1 Mile

#### 3 Mile

#### 5 Mile

Total Population

2,780

20,776

46,246

Total Households

1,172

8,458

18,506

Median Household Income

\$54,351

\$55,956

\$58,496

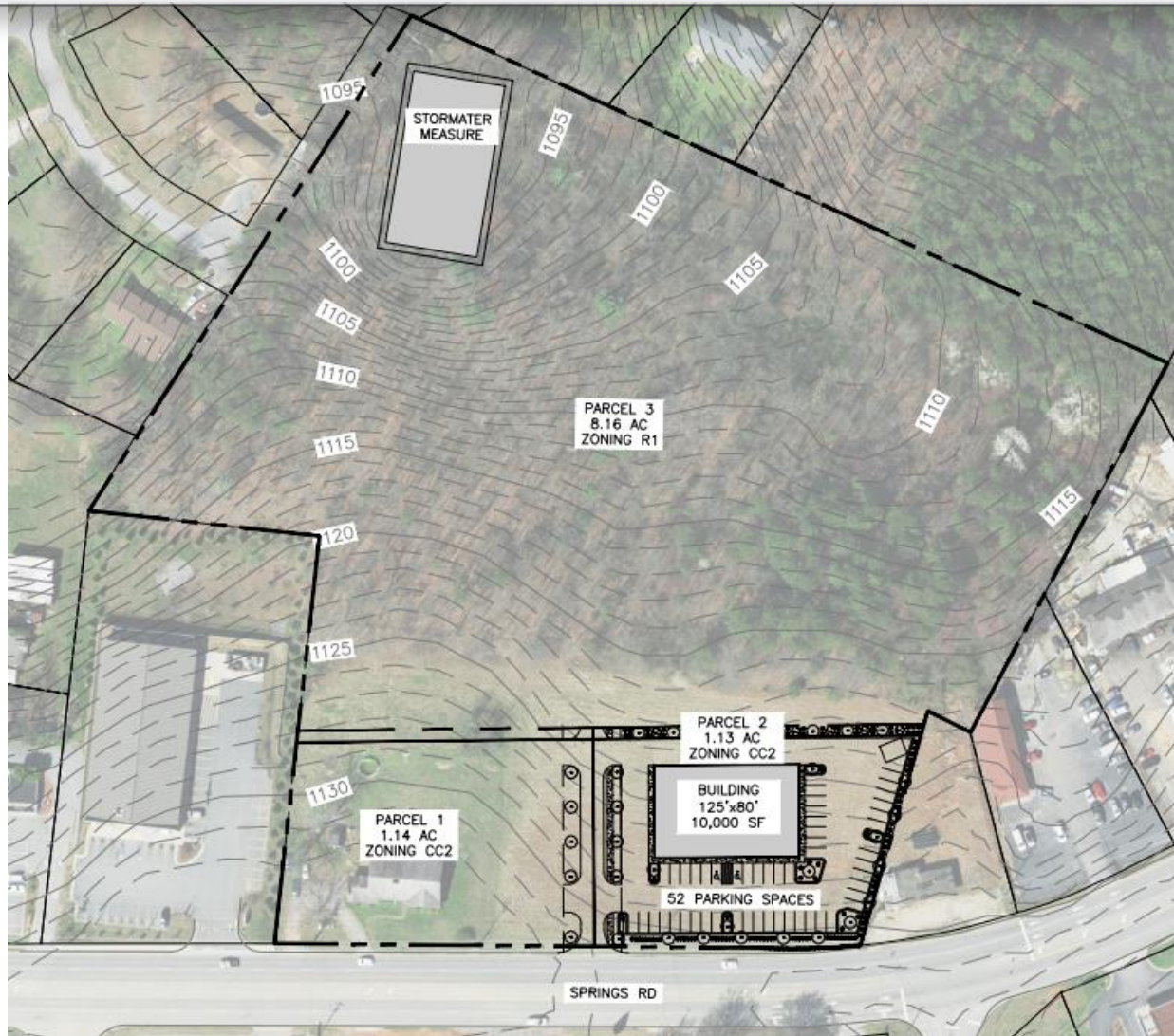
Total Employees

5,404

23,550

37,437

# PROPERTY OVERVIEW/CONCEPTUAL



## FOR MORE INFORMATION:

Ryan Lovern  
828.446.8266  
ryan@commercialfirst.net  
www.commercialfirst.net

3031 N Center St.  
Hickory, NC 28601

COMMERCIAL  FIRST

Commercial Real Estate

Site Selection

