

# 3.51 +/- ACRES ON STARTOWN ROAD

2150 ELBOW ROAD NEWTON, NC 28658



# AERIAL



Hickory  
13 Miles

Newton  
7 Miles

Startown Road (M 154 CPD)

Lincolnton  
9 Miles

VONDREHLE  
CORPORATION

DOLLAR GENERAL

M  
MARATHON

LIBERTY

Lawrence

Exit 33

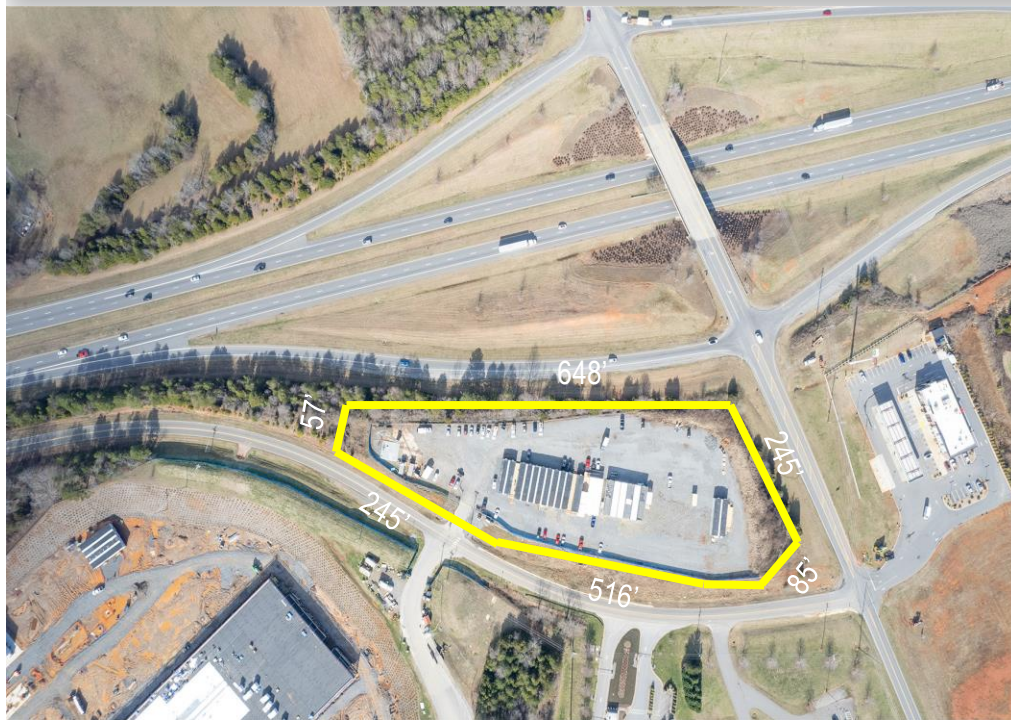
321

bp

Hardee's



# DETAILS



## SPECIFICATIONS

**Price:** \$850,000

**Acres:** 3.51 +/-

**Zoning:** 321 – ED (MX)

**Topography:** Level

3.5 +/- acres in first position off Hwy 321 with! This site has water, sewer, electricity to the site and gravel base for future development. The property is secure with a fence and gates around the entirety of it.

\*Property lines are not to scale.

## DEMOGRAPHICS

	<b>1 Mile</b>	<b>3 Mile</b>	<b>5 Mile</b>
Total Population	<b>1,845</b>	<b>17,054</b>	<b>33,876</b>
Total Households	<b>751</b>	<b>7,109</b>	<b>14,046</b>
Median Household Income	<b>\$41,983</b>	<b>\$39,978</b>	<b>\$40,625</b>
Total Employees	<b>816</b>	<b>6,221</b>	<b>9,882</b>

**FOR MORE INFORMATION:**

Ryan Lovern  
828.446.8266  
ryan@commercialfirst.net  
www.commercialfirst.net

3031 N Center St.  
Hickory, NC 28601



Commercial Real Estate | Site Selection

