

79,500 +/- SF INDUSTRIAL BUILDING | TAYLORSVILLE, NC

165 MATHESON PARK AVENUE TAYLORSVILLE, NC



SPECIFICATIONS

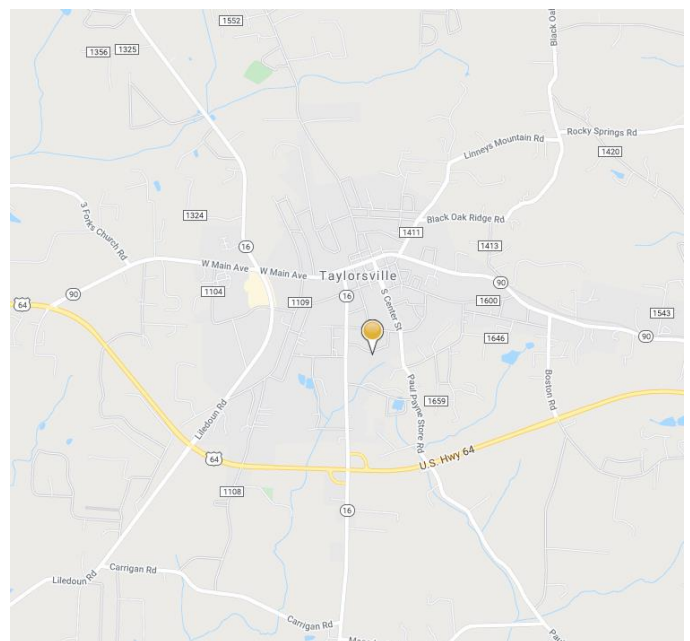
Price: \$1,100,000

SF: 79,500 +/-

Acreage: 9.15 +/-

Zoning: IND

Manufacturing and Warehouse facility in Township of Taylorsville with 5 dock high doors and 4 roll-up doors. Property has varying ceiling heights ranging from 8' to 15'. All buildings have a sprinkler system. Property includes 2 adjacent parcels for expansion.



COMMERCIAL  FIRST

Commercial Real Estate | Site Selection

Shana White

828.446.3404

shana@commercialfirst.net

3031 North Center Street

Hickory, NC 28601

www.commercialfirst.net

AERIAL

165 MATHESON PARK AVENUE TAYLORSVILLE, NC



DEMOGRAPHICS	1 Mile	3 Mile	5 Mile
Total Population	2,341	9,438	16,732
Total Households	964	3,547	6,401
Median Household Income	\$37,682	\$44,664	\$45,366
Total Employees	2,913	4,478	5,510

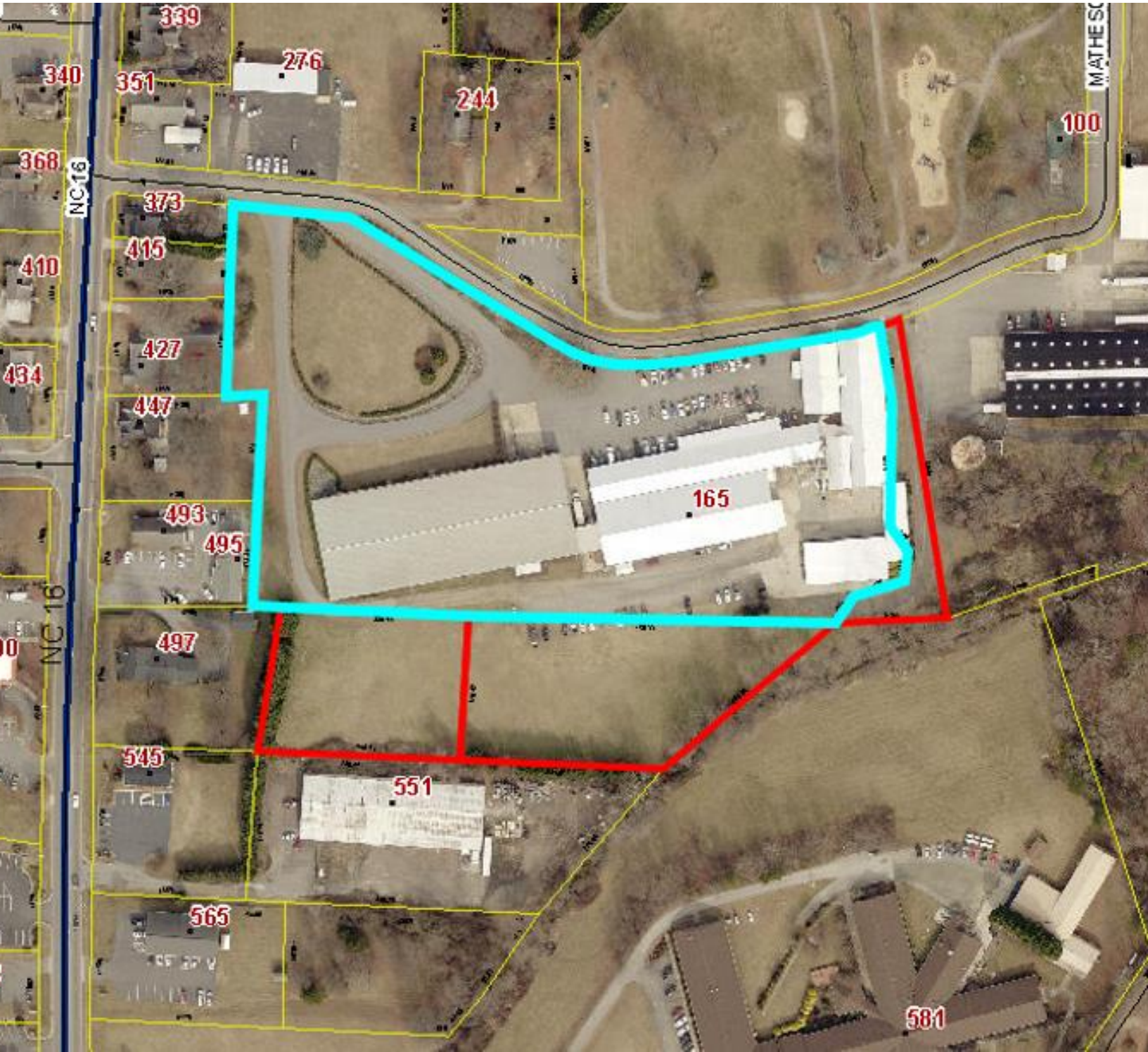
COMMERCIAL  FIRST

Commercial Real Estate | Site Selection

Shana White
828.446.3404
shana@commercialfirst.net
3031 North Center Street
Hickory, NC 28601
www.commercialfirst.net

SITE

165 MATHESON PARK AVENUE TAYLORSVILLE, NC



COMMERCIAL  FIRST

Commercial Real Estate | Site Selection

Shana White

828.446.3404

shana@commercialfirst.net

3031 North Center Street

Hickory, NC 28601

www.commercialfirst.net

PICTURES

165 MATHESON PARK AVENUE TAYLORSVILLE, NC



COMMERCIAL  FIRST

Commercial Real Estate | Site Selection

Shana White
828.446.3404
shana@commercialfirst.net
3031 North Center Street
Hickory, NC 28601
www.commercialfirst.net