

81K +/- SF INDUSTRIAL BUILDING | HICKORY, NC

25 18th STREET NW HICKORY, NC 28601



SPECIFICATIONS

Sales Price: \$1,750,000

SF: 81,856 +/-

Acres: 3.23 +/-

Zoning: IND

Year Built: 1973

Industrial property in City of Hickory with 7 dock high doors, lots of office or tech support space and varying ceiling heights ranging from 11' to 18' feet. Property is gated and building has a sprinkler system.



COMMERCIAL  FIRST

Commercial Real Estate | Site Selection

Shana White

828.446.3404

shana@commercialfirst.net

3031 North Center Street

Hickory, NC 28601

www.commercialfirst.net

SITE

25 18TH STREET NW HICKORY, NC 28601



COMMERCIAL  FIRST

Commercial Real Estate | Site Selection

Shana White

828.446.3404

shana@commercialfirst.net

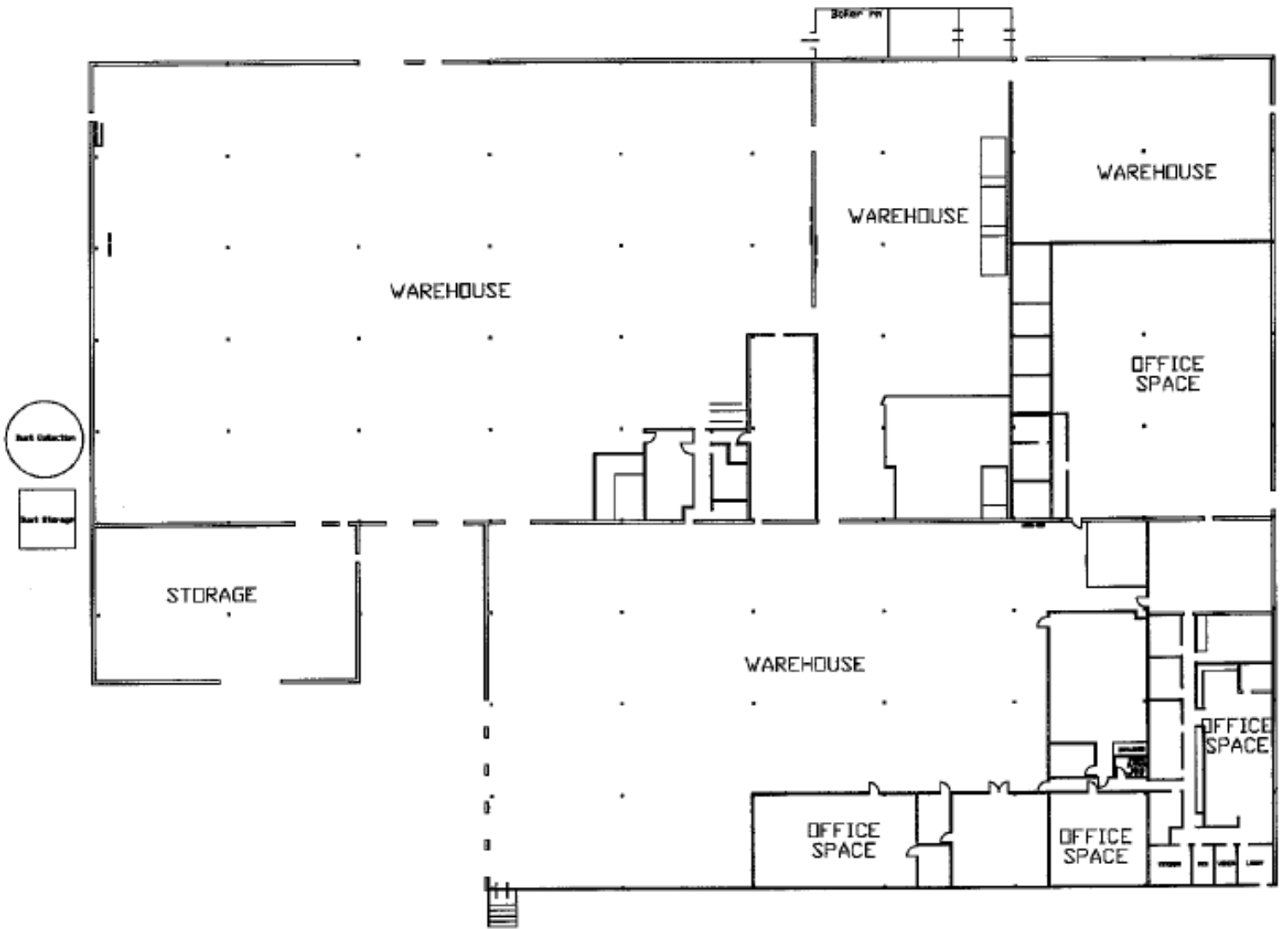
3031 North Center Street

Hickory, NC 28601

www.commercialfirst.net

FLOORPLAN

25 18TH STREET NW HICKORY, NC 28601



COMMERCIAL  FIRST

Commercial Real Estate | Site Selection

Shana White

828.446.3404

shana@commercialfirst.net

3031 North Center Street

Hickory, NC 28601

www.commercialfirst.net

PICTURES

25 18TH STREET NW HICKORY, NC 28601



COMMERCIAL  FIRST

Commercial Real Estate | Site Selection

Shana White

828.446.3404

shana@commercialfirst.net

3031 North Center Street

Hickory, NC 28601

www.commercialfirst.net

DEMOGRAPHICS

25 18TH STREET NW HICKORY, NC 28601

	1 Mile:	3 Miles:	5 Miles:
POPULATION:			
Total Population	3,948	29,801	63,837
Median Age	38.2	38.5	39.4
Employees	6,934	41,566	58,254
Establishments	578	3,196	4,497
INCOME:			
Median HH Income	\$33,151	\$46,829	\$52,035
Average HH Income	\$40,586	\$58,677	\$64,163
Per Capita Income	\$17,322	\$25,027	\$27,182
HOUSEHOLDS:			
Total Households	1,650	12,695	26,926
HOUSING:			
Owner Occupied Housing Units	36.8%	49.5%	56.7%
Renter Occupied Housing Units	53.9%	42.9%	36.4%
Vacant Housing Units	9.4%	7.7%	6.9%
RACE:			
White	47.2%	69.9%	76.7%
Black	37.4%	17.4%	11.5%
Asian or Pacific Islander	4.7%	4.1%	4.5%
American Indian or Alaska Native	0.2%	0.3%	0.3%
Other Races	10.6%	8.3%	7.0%
ETHNICITY:			
Hispanic	13.1%	12.2%	10.1%
Non-Hispanic	86.9%	87.8%	89.9%