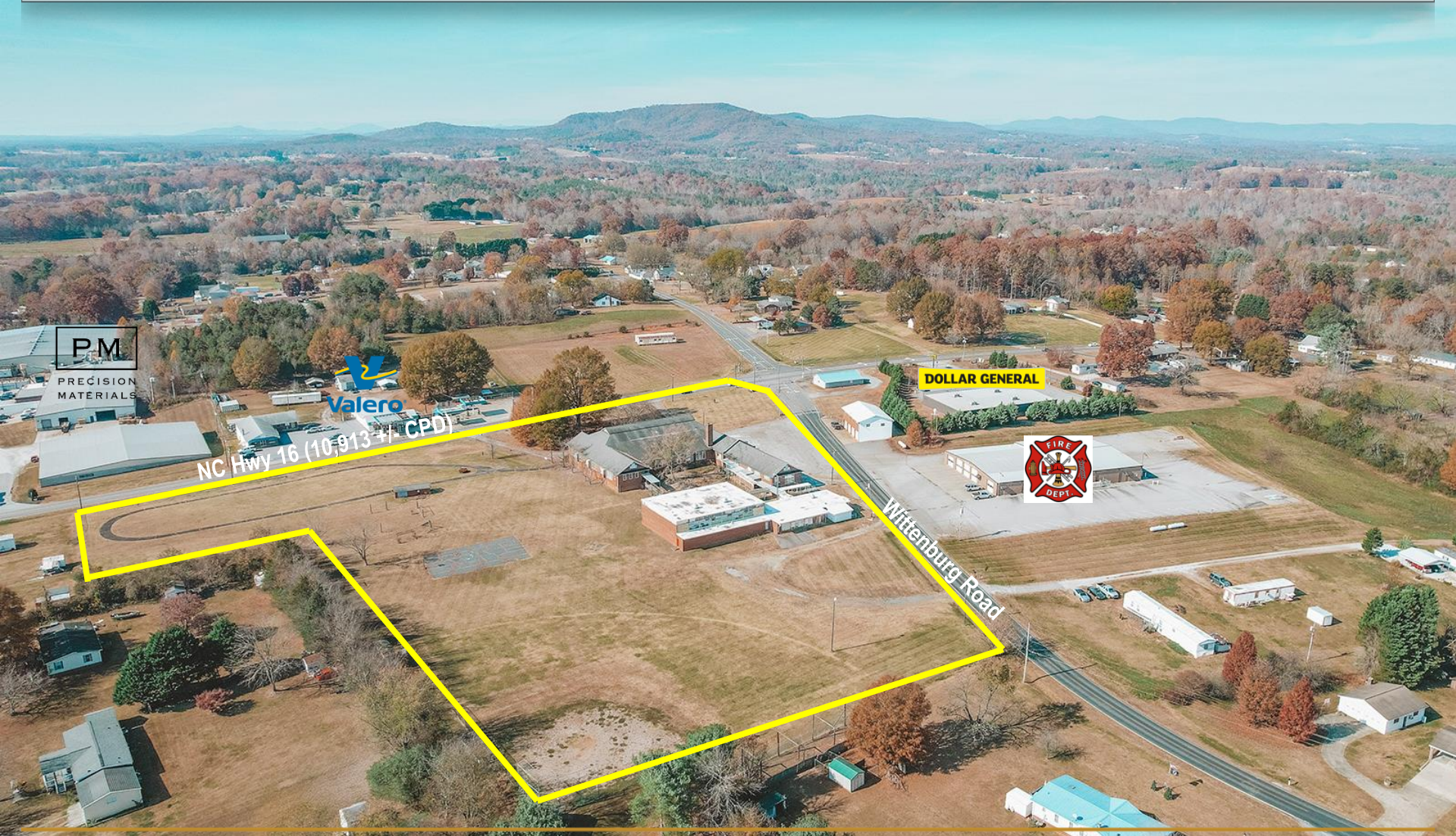


FORMER SCHOOL FOR SALE

6125 NC 16 HWY S TAYLORSVILLE, NC 28681



AERIAL



PM

PRECISION
MATERIALS



NC Hwy 16 (10,913 +/- CPD)

DOLLAR GENERAL



Wittenburg Road



DETAILS

SPECIFICATIONS

| | |
|-------------|--|
| Price: | \$599,000 |
| SF: | 23,356 +/- (based on GIS measurements) |
| Acres: | 8.84 +/- |
| Zoning: | RA - 20 |
| Year Built: | 1948 |

Old Wittenburg School property for sale! Over 7 acres on the corner of Hwy. 16 and Friendship Church Rd. Building has so much history! The property has a detached gym facility, walking track, fields for play or development, and so much more! Please note that the property contains asbestos and lead per previous environmental studies and the roof is in need of replacement.

DEMOGRAPHICS

| RADIUS | 1 MILE | 3 MILE | 5 MILE |
|-------------------------|----------|----------|----------|
| Total Population | 7,281 | 36,777 | 72,484 |
| Total Household | 2,878 | 15,948 | 30,186 |
| Median Household Income | \$47,164 | \$57,096 | \$65,226 |
| Total Employees | 11,305 | 39,206 | 52,803 |



EXTERIOR





**FOR MORE
INFORMATION:**

Jenny Eckard
828.320.8989
jenny@commercialfirst.net

3031 N Center St.
Hickory, NC 28601

www.commercialfirst.net